

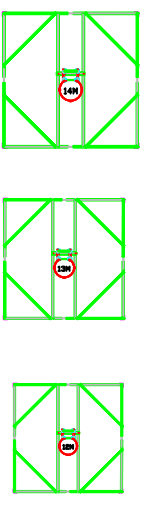
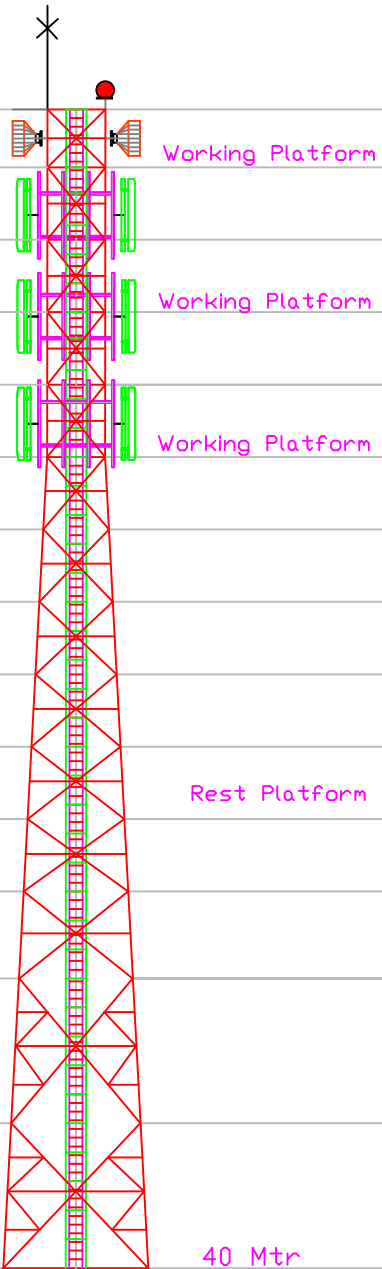
LEVEL	FACE WIDTH	PLATFORM
40000	2000	
38000	2000	Working Platform
35000	2000	
32500	2000	Working Platform
30500	2000	
28000	2000	Working Platform
25500	2273	
23000	2545	
20500	2818	
18000	3091	
15500	3364	Rest Platform
13000	3636	
10000	3909	
5000	4455	
0000	5000	40 Mtr

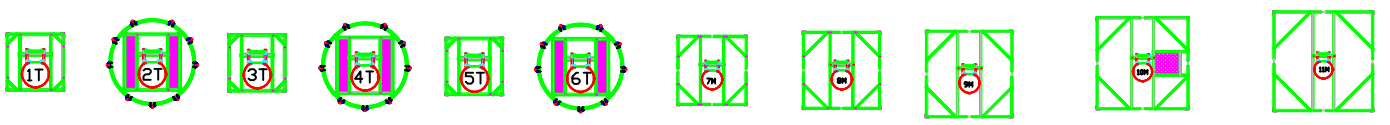
LEG JOINT NAME	LEG LENGTH	LEGS SIZE
A	2000	65x65x5
B	2500	75x5
C	2500	80x80x6
D	2500	90x8
E	2503	110x110x10
F	2503	130x130x10
G	2503	150x150x12
H	3004	150x150x12
I	5006	150x150x12
J	5006	150x150x16

PANEL NO	LENGTH (METER)	DIAGONALS	PANEL TOP - HORIZONTALS	PANEL MID - HORIZONTALS	PLAN BRACING	SEC. BRACING
1	2	50x4	50x50x4	45x45x04	45x45x4	
2	2.5	55x55x4	50x50x4	45x45x04	45x45x4	
3	2.5	55x55x4	50x50x4	45x45x04	50x50x4	
4	2.5	55x5	50x50x4	45x45x04	50x50x4	
5	2.5	65x65x5	50x50x4	50x50x4	50x50x4	
6	2.5	55x55x5	50x50x4	50x50x4	50x50x4	
7	2.5	55x55x5	50x50x4	50x50x4	50x50x4	
8	2.5	55x55x5	50x50x4	50x50x4	50x50x4	
9	2.5	60x60x5	50x50x4	50x50x4	50x50x4	
10	2.5	65x5	50x50x4	50x50x4	50x50x4	
11	2.5	70x5	50x50x4	50x50x4	50x50x4	
12	3	70x5	50x50x4	50x50x4	55x55x4	45x45x4
13	5	70x70x5	50x50x4	50x50x4	55x55x4	45x45x4
14	5	75x75x5	60x60x4	60x60x4	60x60x4	50x50x4



PLAN VIEWS



1) Remote Radio Head - 15nos (Top 20m to 40m Height) (Total Weight 390kgs.)	TITLE	40 METER TOWER	Wind Speed	180 KMPH	Design	TIA/EIA-222 G
2) Sectoral Antennas - 15nos (Top 20m to 40m Height) (Total Weight 384kgs.)	SUB. TITLE	SQUARE ANGULAR TOWER	Deflection	< 1.0 Degree	Rev.	
3) Microwave Antennas 0.6m-2nos (Top 30m to 40m Height) (Total Weight 40kgs.)	Drawing	BT - 2024 Project	Loading	1589 kgs.	Drawn Date	08-12-2023
4) Microwave Antennas 0.9m-3nos (Top 20m to 35m Height) (Total Weight 90kgs.)	BHUTAN TELECOM LTD		Tower Weight 10000 kgs.			
5) Microwave Antennas 1.2m-4nos (Top 20m to 30m Height) (Total Weight 120kgs.)						
6) Microwave Antennas 1.8m-3nos (Top 20m to 30m Height) (Total Weight 120kgs.)						
3) Antennas Mounting Structure (Total Weight 450kgs.)						

**NOTES**

- ALL DIMENSIONS ARE IN MM UNLESS NOTED OTHERWISE.
- USE M20 GRADE CONCRETE AND F8 500 GRADE FWM STEEL.
- CLEAR COVER TO MAIN REINFORCEMENT -  
(a) 50MM FOR FOOTING (b) 25MM FOR BEAMS (c) 40MM FOR COLUMNS
- PRIOR TO AND DURING CONCRETING ALL BOLTS SHALL BE SECURELY HELD IN POSITION BY USE OF TEMPLATE.
- BEFORE COMMENCEMENT OF CONSTRUCTION USING THIS DESIGN, CLIENT/CONTRACTOR SHALL CARRY OUT DETAILED SOIL INVESTIGATION OF EVERY SITE.
- THIS FOUNDATION DESIGN SHALL NOT BE USED IN CASE HIGHLY SOIL ARE FOUND AT ANY DEPTH DURING SOIL INVESTIGATION.
- CONCRETE SHALL BE MECHANICALLY MIXED & VIBRATED.
- PROPER CURING OF CONCRETE SHALL BE DONE.
- NO REVISIONS ARE ALLOWED AFTER THE COMMENCEMENT OF WORK.
- ANY DISCREPANCY SHOULD BE BROUGHT TO THE CONSULTANTS' ATTENTION.

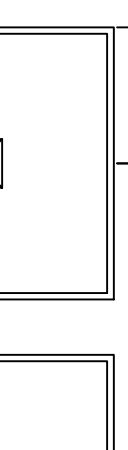
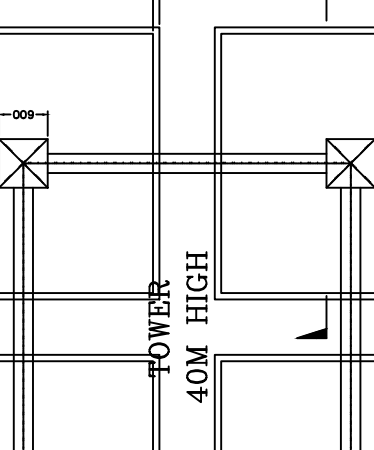
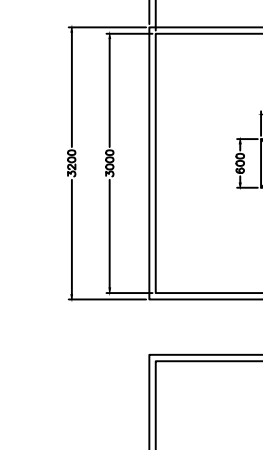
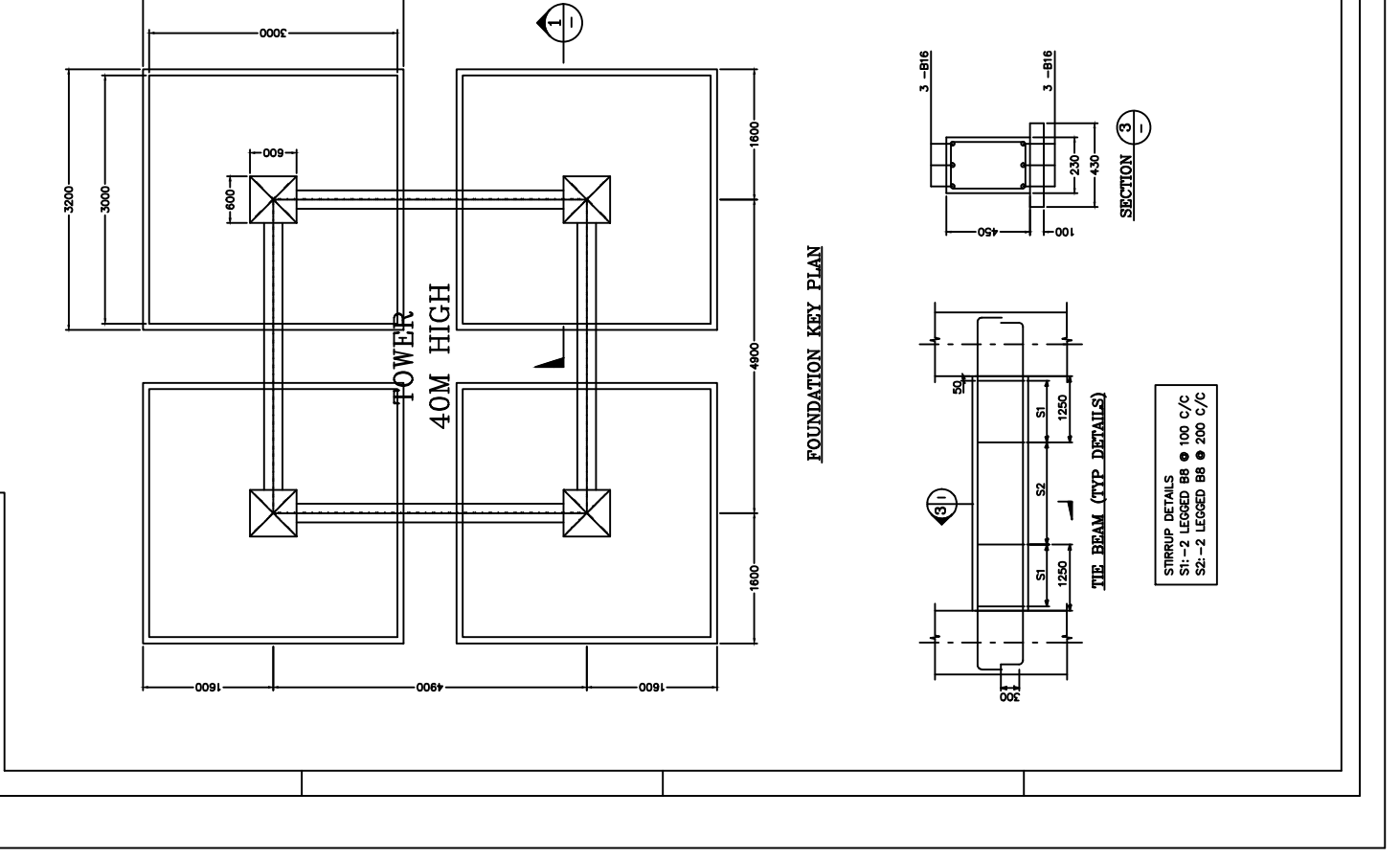
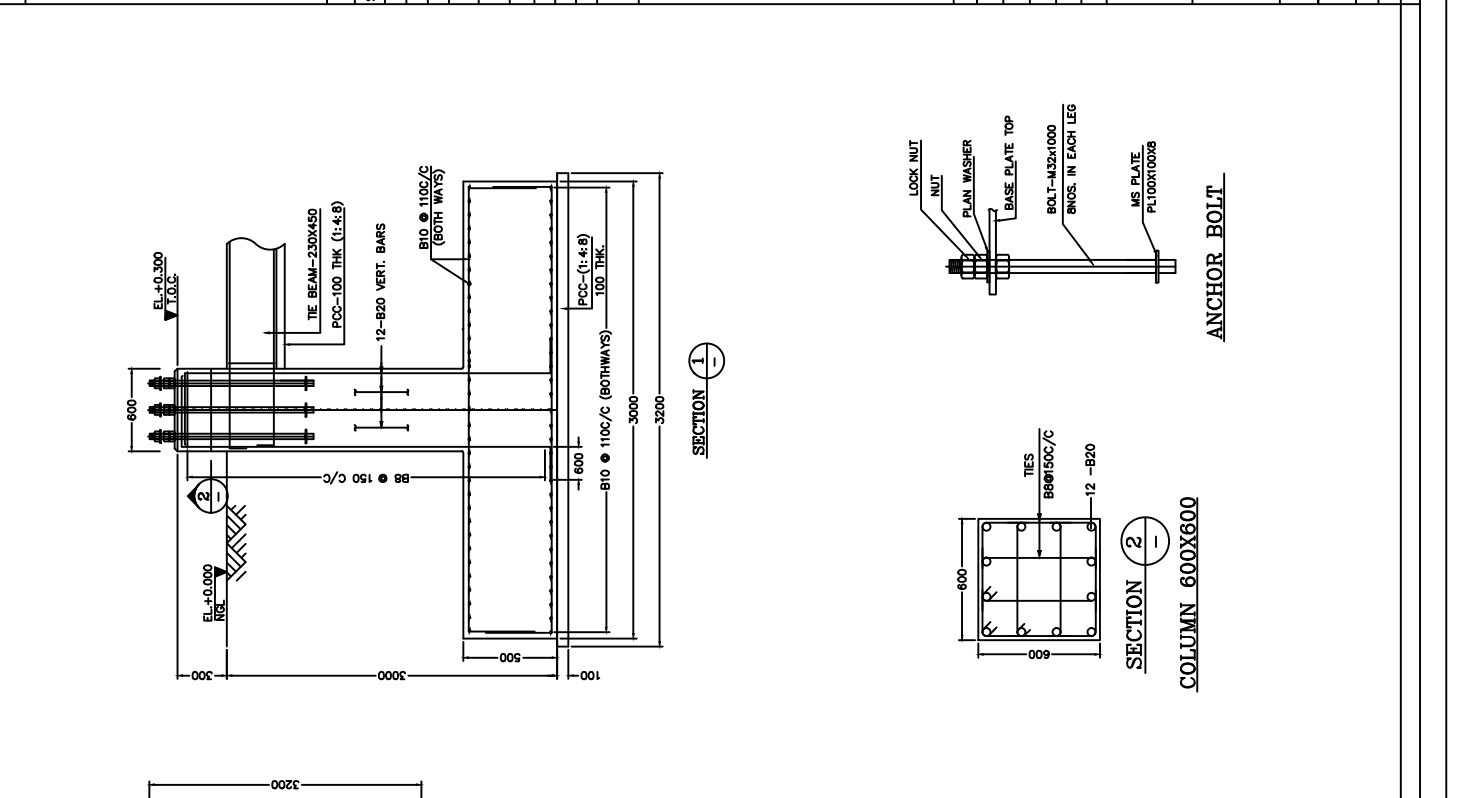
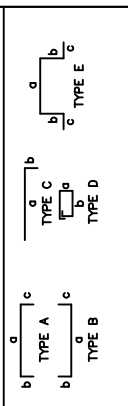
**GENERAL DETAILS**

S.NO	DESCRIPTION	DETAILS
1	SOIL BEARING CAPACITY	10.0 T/SQM
2	DRY DENSITY OF SOIL	1.8 T/SQM
3	ANGLE OF REPOSE	30.00 DEGREE

**BILL OF MATERIALS**

ITEM	UNIT	TOTAL
EXCAVATION	CUM	131.0
PCC-(1:4:8)	CUM	4.85
RCC-M20	CUM	23.81
STEEL-F8500	KG	2180

\*THESE QUANTITIES DOES NOT INCLUDE CHAIRS WEIGHT.



**FOUNDATION KEY PLAN**

**TIE BEAM (TYP DETAILS)**

**ANCHOR BOLT**

**COLUMN 600X600**

**STIRRUP DETAILS**

**REVISION NOTES**

**CLIENT :** BHUTAN TELECOM LTD.

**DESIGN BY :** BHUTAN TELECOM LTD.

**PROJECT :** 40M HIGH SQUARE ANGULAR TOWER

**TITLE :** FOUNDATION PLAN DETAILS FOR 40M HIGH TOWER

**SBC :** 10.0 T/SQM

**DRAWING No. :** SH. NO. REV.

**BT-2024 Project**

**DATE :** 14/05/23

**SCALE :** NTS

**APPROVED :**

**CHECKED :**

**DATE :**

**DATE :**

**DATE :**

**DATE :**