
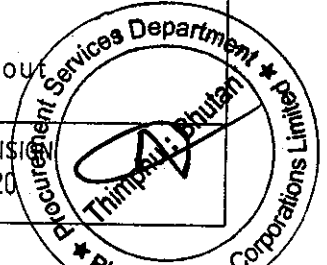


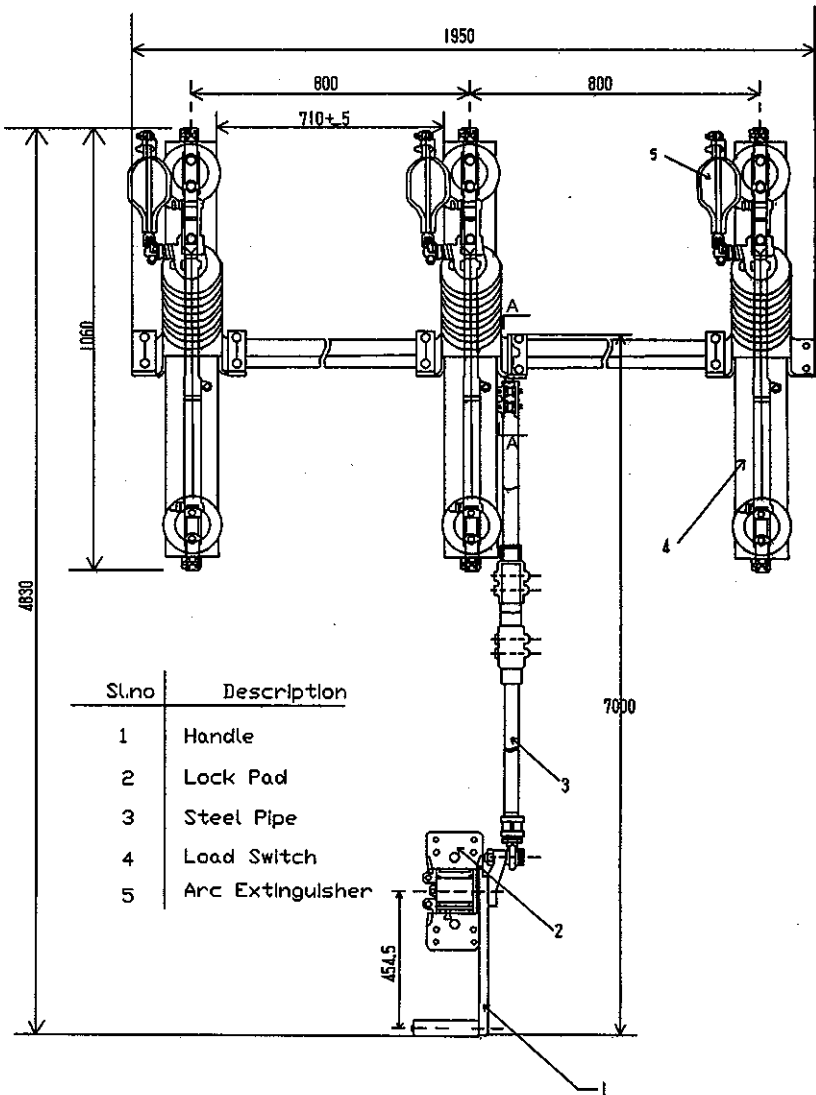
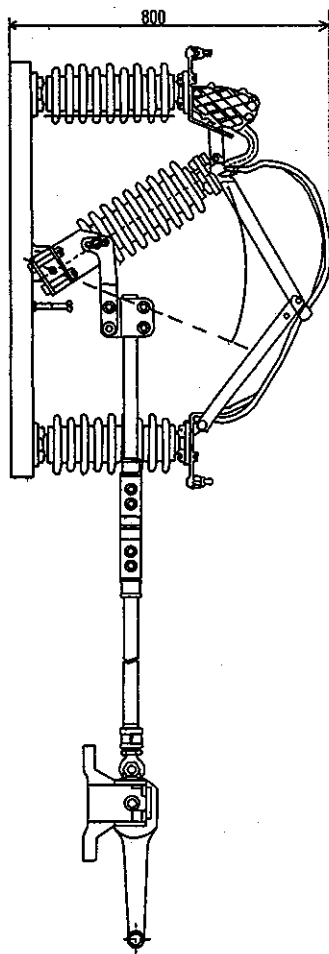
Rated Current (A)	Dimensions (mm)				
	A	B	C(min)	D(Max)	F
1 to 50	12.5±0.2	19.0±0.3	610	5	7.9
63 to 100	19.0±0.3	#	610	8	11.1

Not applicable
 φF - The size and shape should be such that the fuse-link will freely enter a fuse barrel having the inside diameters as shown.

00xIDxLENGTH (26mmx13mmx465mm)

	BHUTAN POWER CORPORATION LIMITED		ENGINEERING AND RESEARCH DEPARTMENT	
	TITLE : DISTRIBUTION DESIGN & CONSTRUCTION STANDARD		Details of 11 kV and 33 kV Fuse Cut-out	
TITLE	NAME	DATE	DRAWING NO. BPC-DDCS-2020-28	REVISION 2020
DESIGNED BY				
CHECKED BY				
APPROVED BY				





Sl.no	Description
1	Handle
2	Lock Pad
3	Steel Pipe
4	Load Switch
5	Arc Extinguisher

Rated Voltage:
 Rated short time Withstand current for 1 sec.
Current Rating:
 Diameter and Length of the GI operating Pipe
 Size & length of the channel for mounting
 Minimum clearances between phases
 Type of mounting
 Power frequency withstand Voltage
 1) Across Isolating Distance
 2) To earth and between poles
 Lightning impulse withstand Voltage
 1) Across Isolating Distance
 2) To earth and between poles
 Type of Insulator

11kV
 20kA
 630A
 25mm NBx6 mtr. Length
 75mmx40mmx660mm Long
 800mm
 vertical

33kV
 16kA
 630A
 32mmx7 mtr. Length
 75mmx40mmx660mm Long
 800mm
 vertical

32kV
 28kV
 85kV
 75kV
 Post Type with alternating shed

80kV
 70kV
 195kV
 170kV
 Post type with alternating shed



BHUTAN POWER CORPORATION LIMITED

ENGINEERING AND RESEARCH DEPARTMENT

TITLE : DISTRIBUTION DESIGN & CONSTRUCTION STANDARD

Typical Arrangement of 11kV & 33 KV LBS

TITLE	NAME	DATE
DESIGNED BY		
CHECKED BY		
APPROVED BY		

DRAWING NO. BPC-DDCS-2020-29

REVISION
2020

