

- [illegible]

SlNo	DESCRIPTION	DETAILS
1	SOIL BEARING CAPACITY	10.00 T/SQM
2	DRY DENSITY OF SOIL	1.75 T/SQM
3	ANGLE OF REPOSE	25.00 DEGREE

**BILL OF MATERIALS**

ITEM	UNIT	100%
EXCAVATION	CUM	61.1
POC-(1.4.8)	CUM	2.3
MCC-420	CUM	0.3
STEEL-F4415	KG	850

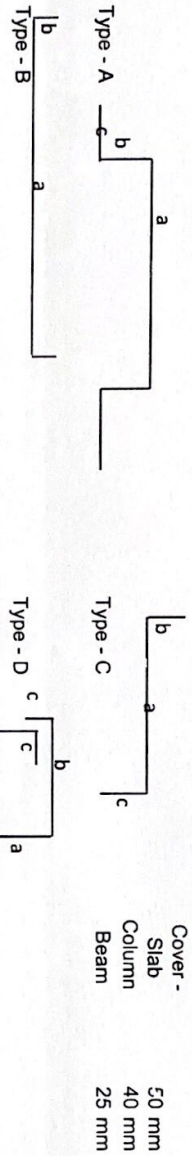
CHAIRS SHALL BE PROVIDED WHERENEVER REQUIRED

**BAR BENDING SCHEDULE**

$\begin{array}{c} \text{b} \\ \text{TYPE A} \\ \text{c} \end{array}$	$\begin{array}{c} \text{a} \\ \text{b} \\ \text{c} \end{array}$	$\begin{array}{c} \text{a} \\ \text{b} \\ \text{c} \end{array}$	$\begin{array}{c} \text{a} \\ \text{b} \\ \text{c} \end{array}$
TYPE B	TYPE C	TYPE D	TYPE E

REVISION NOTES					
REV. NO.	DESCRIPTION	DATE	SIGN.		
DRAWN	CHECKED	APPROVED	DATE	SCALE	
Customer	Went back	Went back	11-0-2001	MS	
<p>BY BHUTAN TELECOM LTD.</p> <p>BY BHUTAN</p>					
<p>FOR MR. ICON POWER SOLUTIONS PVT. LTD.</p> <p>GURGAON</p>					
<p>Project: <i>General Project</i>      Location: <i>Delhi</i></p>					
<p>1. INFORMATION DETAILS FOR YOUR INFO:      THIRUVALEU TOWNSHIP</p> <p>DATE: 10/1/2004</p>					
DRAWING NO.		SHEET NO.		REV.	
ACD-319					

### Bar Bending Schedule of 30m high 3legged tower



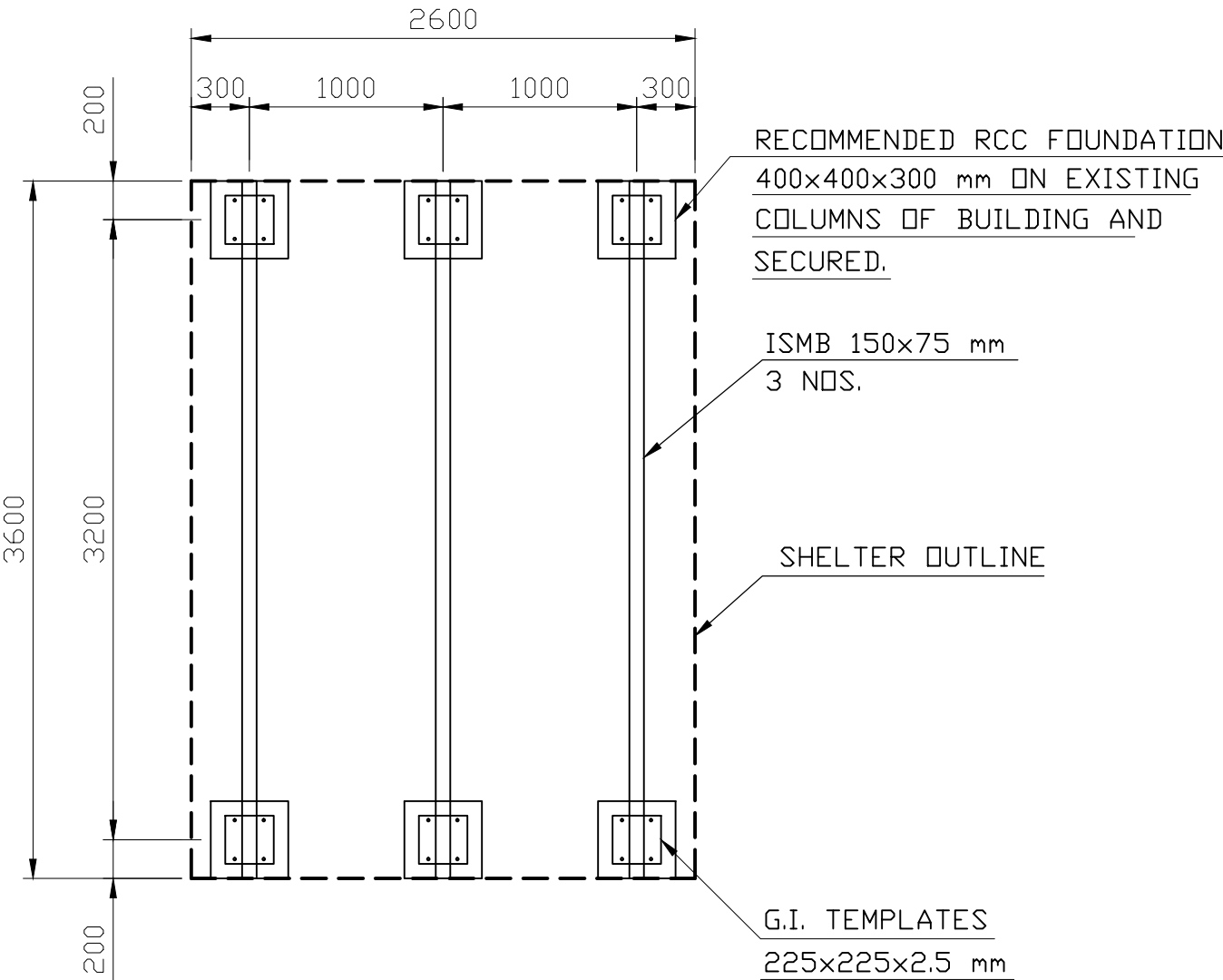
Item	Position	Type	Dia. Of Rebar (mm)	Size (mm)			Length (mm)	Qty in Nos both ways or total	Unit wt (kg/m)	Total Weight of (kg)
				a	b	c				
Raft Slab	Top	B	B10	2250	150	-	2550	84	0.62	132
	Bottom	B	B10	2250	150	-	2550	108	0.62	170
Tie Beams	Top	B	B16	4150	300	-	4750	6	1.58	45
	Bottom	B	B16	4150	300	-	4750	6	1.58	45
	Strips	D	B8	250	250	80	1160	75	0.40	34
	Main	C	B20	3200	330	750	4280	24	2.47	254
Column	Ties	D	B8	342	342	80	1528	69	0.40	42
		D	B8	242	242	80	1128	69	0.40	31
Total (5% extra considered)										800

\* Chairs Shall be Provided whenever required

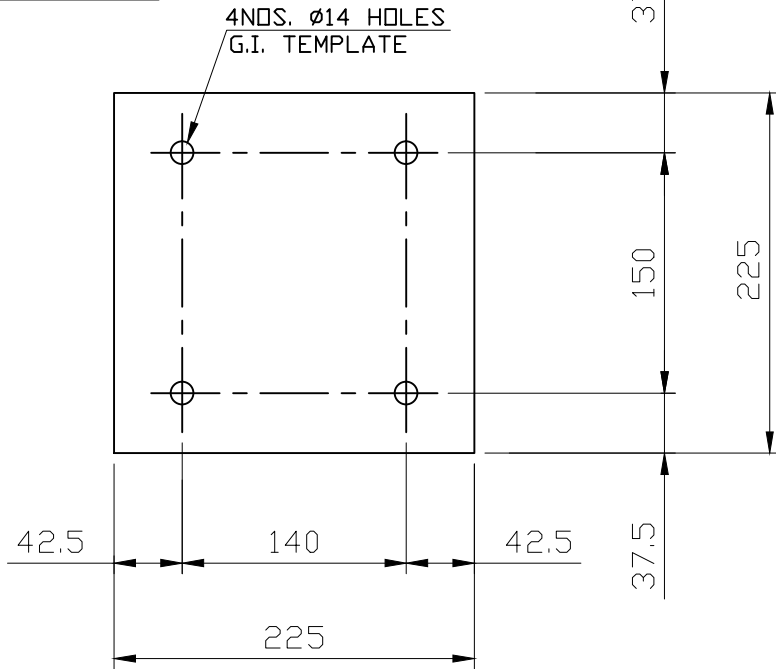
Notes :

1. Dimensions of Bars are along the Center Lines.
3. Splicing of Bars should not be more than 50%. Length of splice as per Standards.

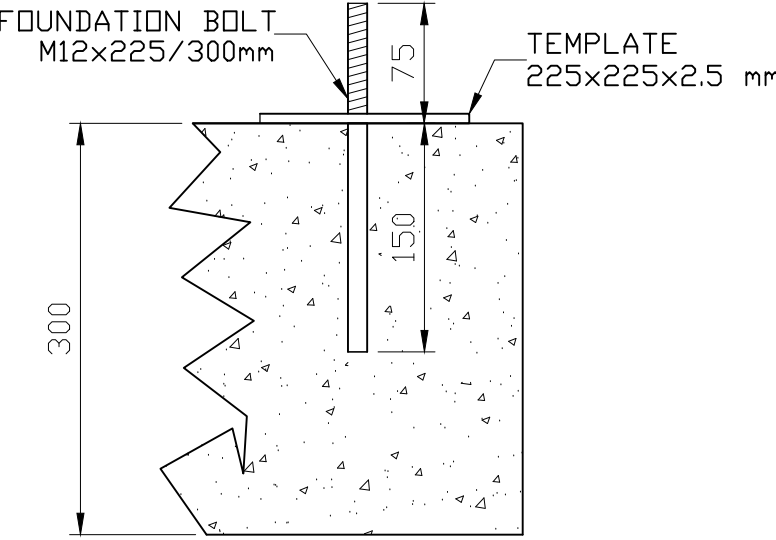
FOUNDATION DETAILS FOR PREFAB SHELTER  
ROOF TOP SHELTER



SKID MOUNTING ON R.C.C COLUMN



TEMPLATE 225x225x2.5 mm



FOUNDATION BOLT  
INSERTED IN R.C.C. COLUMN

SUGGESTED LAYOUT BY CUSTOMER

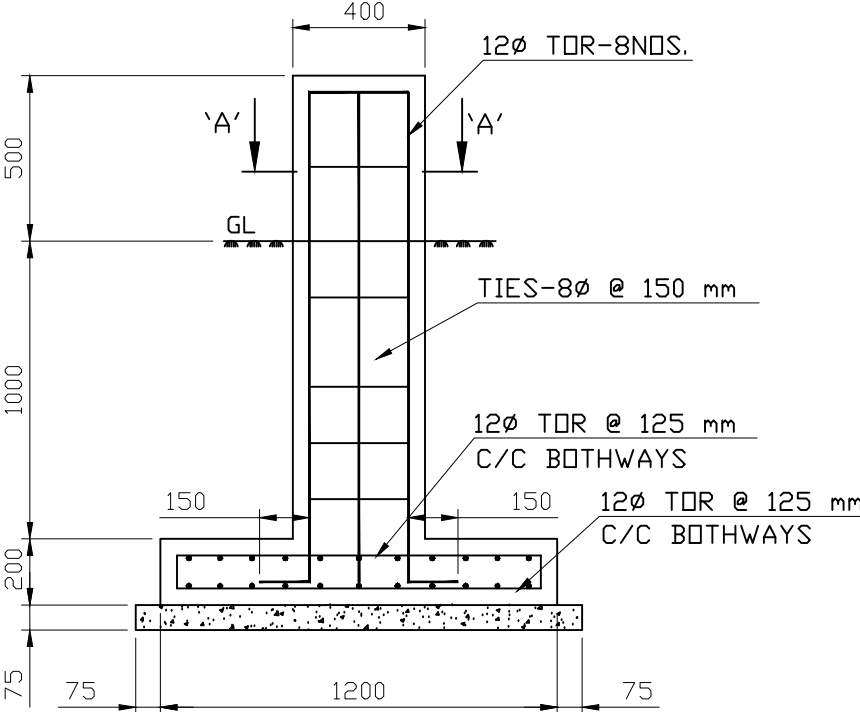
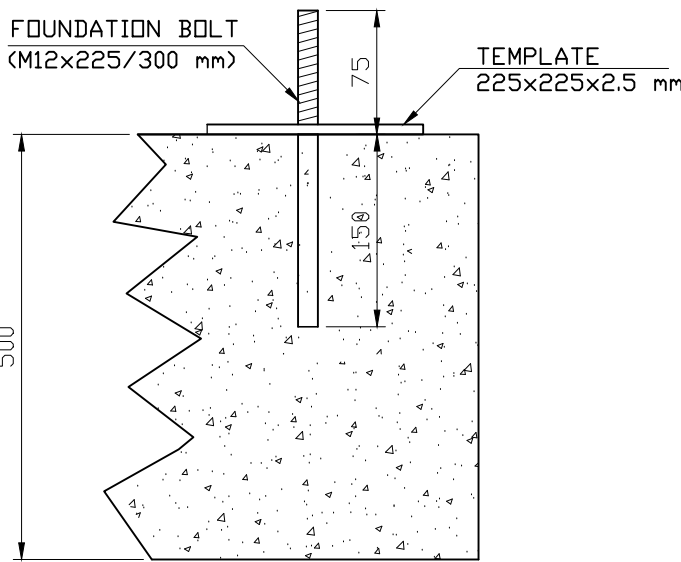
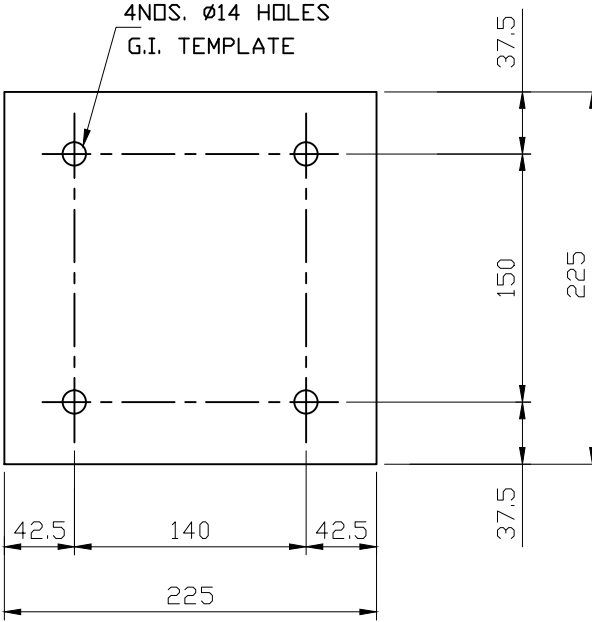
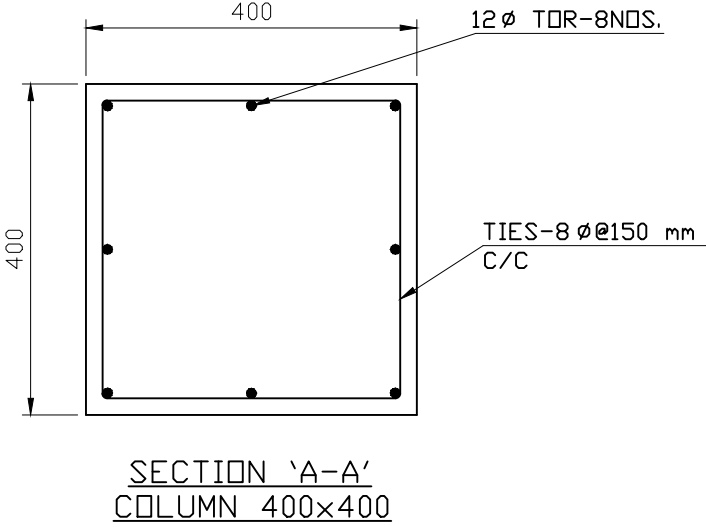
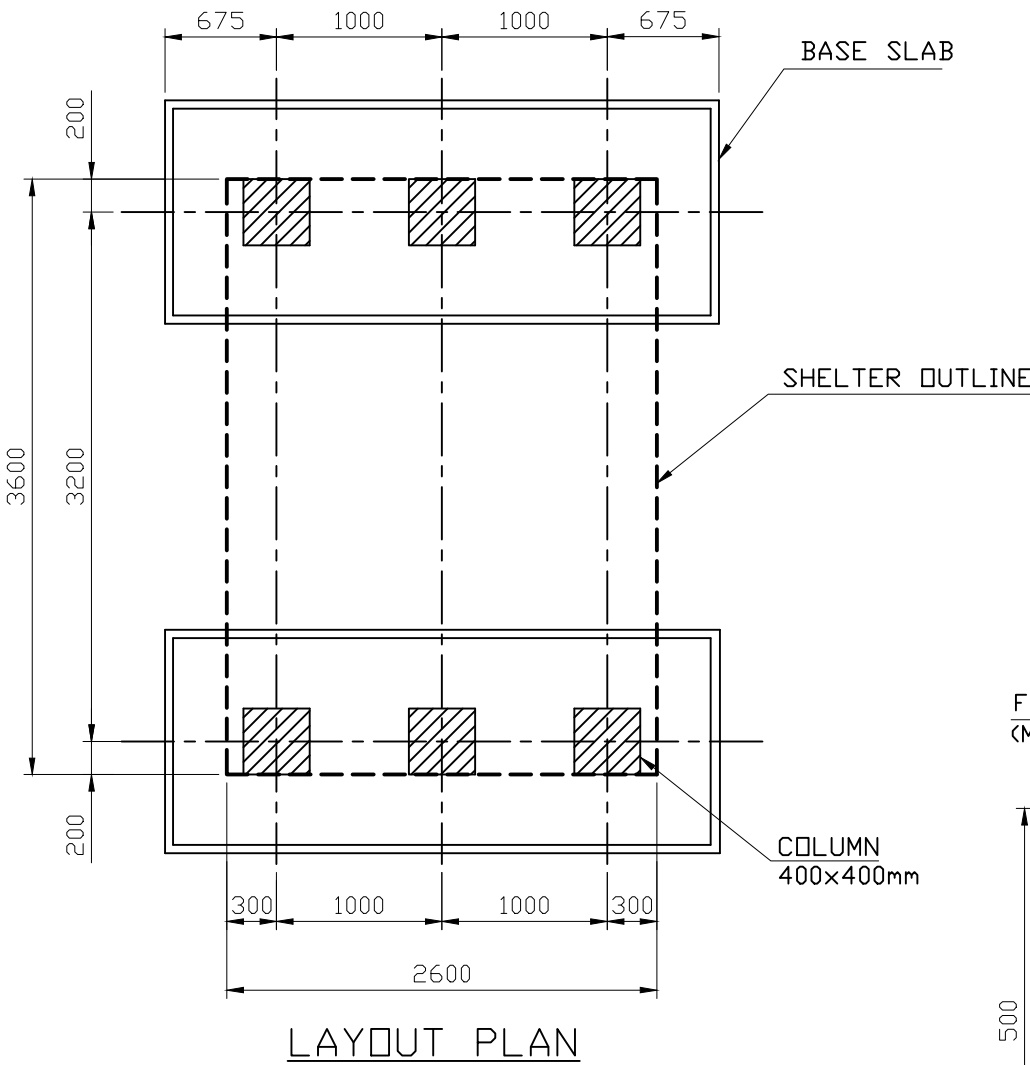
ZEP INFRATECH LIMITED			
PROJECT: PRAGATI	DRAWN BY: Shiv kr.	SIG. & DATE: 29/11/18	
	CHECKED BY: Shiv kr.		
TITLE: FOUNDATION DWG (SIZE: 3.6x2.6x2.5 M)	APPROVED BY: R. Chauhan		
	CUSTOMER'S APPR:		
DRG. NO. : ZTS PRG 1 6728	FILE NAME: //D/DWG/MKT. DRG./PRA/FOUNDATION 3.6x2.6x2.5 M		
REV : 00	SHEET '1 OF 2	SCALE :N.T.S.	

REV. NO.	DATE	DESCRIPTION OF CHANGE	CHECKED BY :	APPROVED BY :
----------	------	-----------------------	--------------	---------------

CAUTION : THIS DRG IS PROPERTY OF ZIL ANY REPRODUCTION OF THIS IN PART OR FULL WITHOUT AUTHORIZATION BY ZIL WOULD BE LIABLE FOR LEGAL ACTION.



FOUNDATION DETAILS FOR PREFAB SHELTER  
GROUND BASED SHELTER



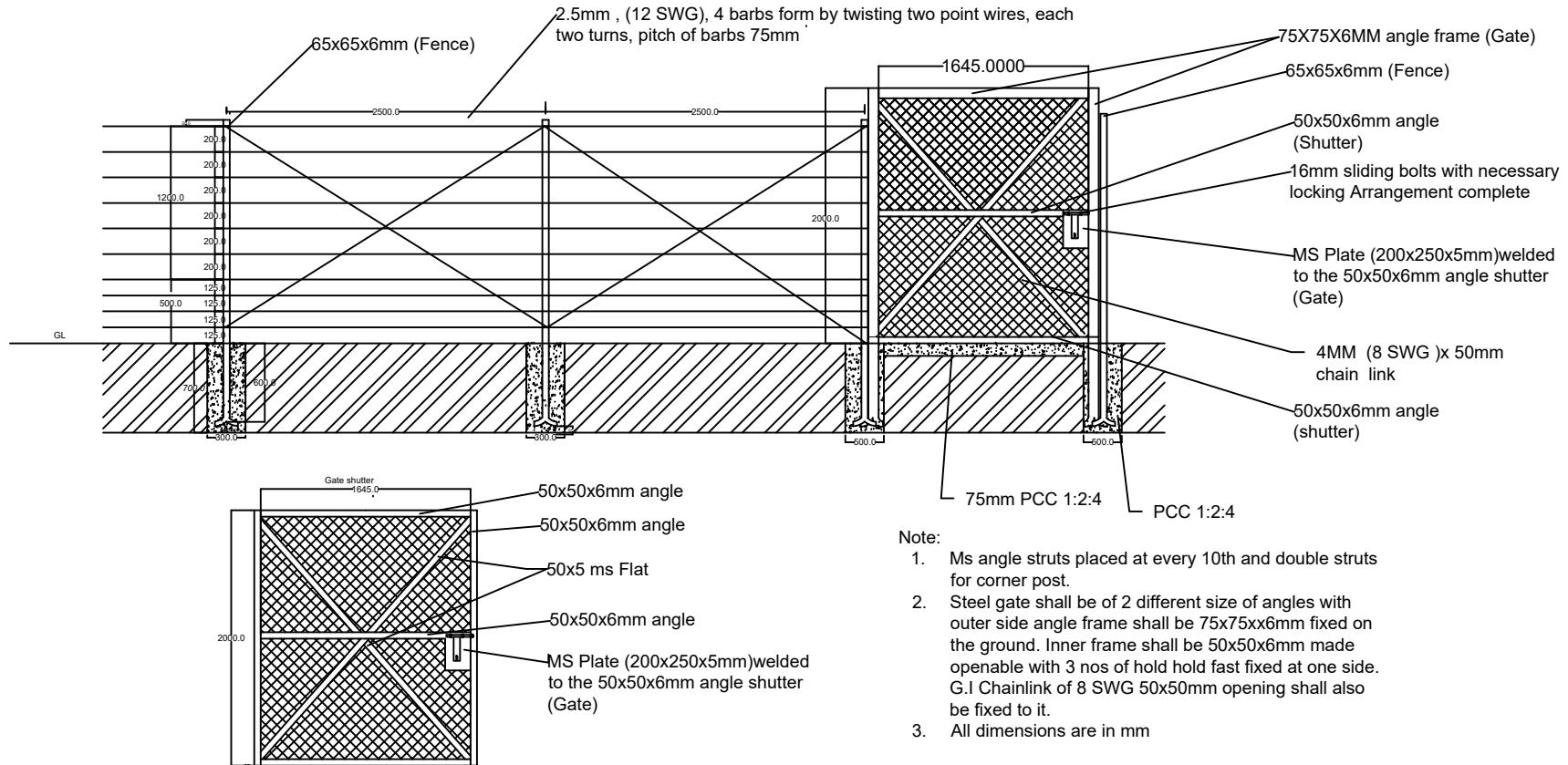
- NOTES :-
1. PCC SHALL BE OF GRADE M10.
  2. CONCRETE MIX SHALL BE OF GRADE M20 (1:1.5:3)
  3. REINFORCEMENT SHALL BE TOR BARS OF GRADE FE415

SUGGESTED LAYOUT BY CUSTOMER

REV. NO.	DATE	DESCRIPTION OF CHANGE	CHECKED BY :	APPROVED BY :
CAUTION : THIS DRG IS PROPERTY OF ZIL ANY REPRODUCTION OF THIS IN PART OR FULL WITHOUT AUTHORIZATION BY ZIL WOULD BE LIABLE FOR LEGAL ACTION.				

ZEP INFRATECH LIMITED			
PROJECT: PRAGATI	DRAWN BY: Shiv kr.	SIG. & DATE: 29/11/18	
TITLE: FOUNDATION DWG (SIZE: 3.6x2.6x2.5 M)	CHECKED BY: Shiv kr.		
	APPROVED BY: R. Chauhan		
	CUSTOMER'S APPR:		
DRG. NO. : ZTS PRG 1 6728	FILE NAME: //D/DWG/MKT. DRG/PRAGATI/FOUNDATION 3.6x2.6x2.5 M		
REV : 00	SHEET : 2 OF 2	SCALE : N.T.S.	

## BARBED WIRE FENCING AND GATE DRAWING



Title : Barbed wire fencing

BHUTAN TELECOM LIMITED

Checked by:

Approved by: