
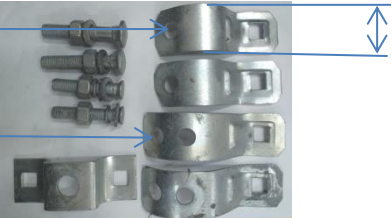
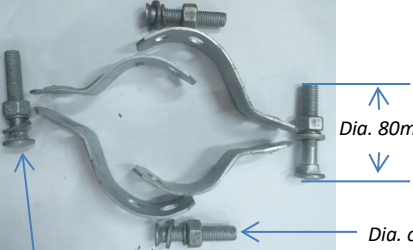
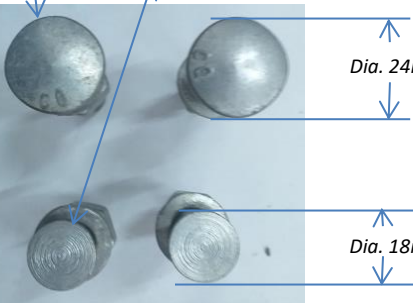
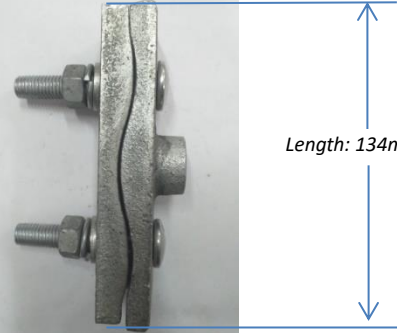


Item Description	Pictures
<ul style="list-style-type: none"> ▪ Name : Pole bend, ▪ Material: Galvanized Sheet, ▪ Thickness of sheet: 2mm, ▪ Width of sheet: 40mm ▪ Suitable for: 80mm-100mm pole size, ▪ Nut-bolt length: 80mm ▪ Nut-bolt diameter: 11mm ▪ Nut-bolt head dia:22mm 	
<p><i>Dia. of hole 15mm</i></p> <p><i>Dia. of hole 15mm (double hole)</i></p>	 <p><i>Width of the pole bend sheet 40mm</i></p>
<p><i>Dia. of bolt 11mm</i></p>	 <p><i>Dia. 80mm</i></p> <p><i>Dia. of bolt 11mm</i></p>
	 <p><i>Dia. 24mm</i></p> <p><i>Dia. 18mm</i></p>
<ul style="list-style-type: none"> ▪ Name: Suspension Clamp straight, ▪ Material: Galvanized Iron, ▪ Two nut-bolts (11 mm dia) & (72mm length) ▪ One nut bolt-(11mm dia) & 90mm length (middle hole) 	 <p><i>Length: 134mm</i></p>

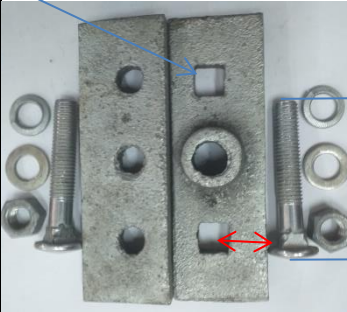
- Internal Part of suspension clamp (straight)

Dia. 14mm x 14mm hole



Grooves to pass messenger wires (4mm-6mm dia wire size)

Dia. 14mm hole

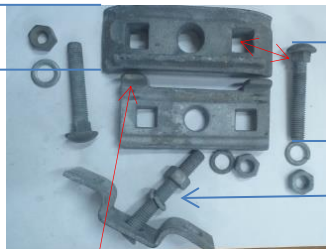


Length: 72mm

- Name: Suspension Clamp Curve,
- Material: Galvanized Iron,
- Length: 120mm,
- Curve length: 140mm,
- Side Nut-bolt: Two numbers (length 80mm, Bolt head dia. 26mm, end head dia. 11mm),
- Middle nut-bolt: one number (length 90mm, bolt head dia. 20mm, end head 11mm dia.)



Width: 48mm



80mm length

90mm length middle bolt

Width: 48mm



Width: 58mm